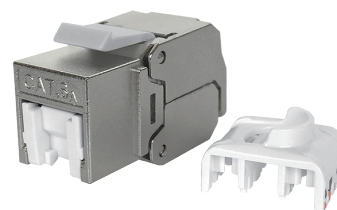


Work Area Solutions

STP C6A Keystone Jack

The Forteq STP C6A Keystone Jack is designed to easily snap in and out of the wall outlet, patch panel and surface mount box. It is individually terminated using Insulation Displacement Connectors (IDC) with punch down tool for quick installation.

Fully automatic press-fit production of PCB assembly to ensure consistency quality and complies with international standards up to 10GHz.



Forteq STP C6A Keystone

Technical Information

Specification:

- Lead-free & RoHS compliant
- Meet the ANSI/TIA-568-C.2 Category 6A with the applicable electrical transmission characteristics
- Comply with requirements of ANSI/TIA-1096-A (FCC Part 68) and LEVEL A reliability requirement of IEC 60603-7 for RJ45 8-way connector

Electrical:

- Voltage proof: 1,000V DC or AC peak, contact-to-contact
- Current carrying capacity: 0.75Amps minimum
- Contact resistance: 20mΩ maximum
- Insulation resistance: 500mΩ minimum at 100V DC
- Input to output resistance: 200mΩ maximum
- DC resistance: 0.2Ω maximum

Mechanical:

- Mechanical operation: 750 cycles minimum for insertion/withdrawal with modular plug
20 cycles minimum for cable re-termination
200 cycles minimum for jumper re-termination
- Effectiveness of connector coupling devices: 50N (11 lbf) for 60s ± 5s

Environment:

- Temperature: -10°C ~ 60°C
- Humidity: 10% ~ 90% RH

Ordering Information

| Description | Catalogue Number |
|---|------------------|
| Forteq 180° Cat 6A Shielded Keystone Jack, T568A/T568B, 110 IDC | FT-C6A-FJ180 |

Height of Locking: 19.20mm